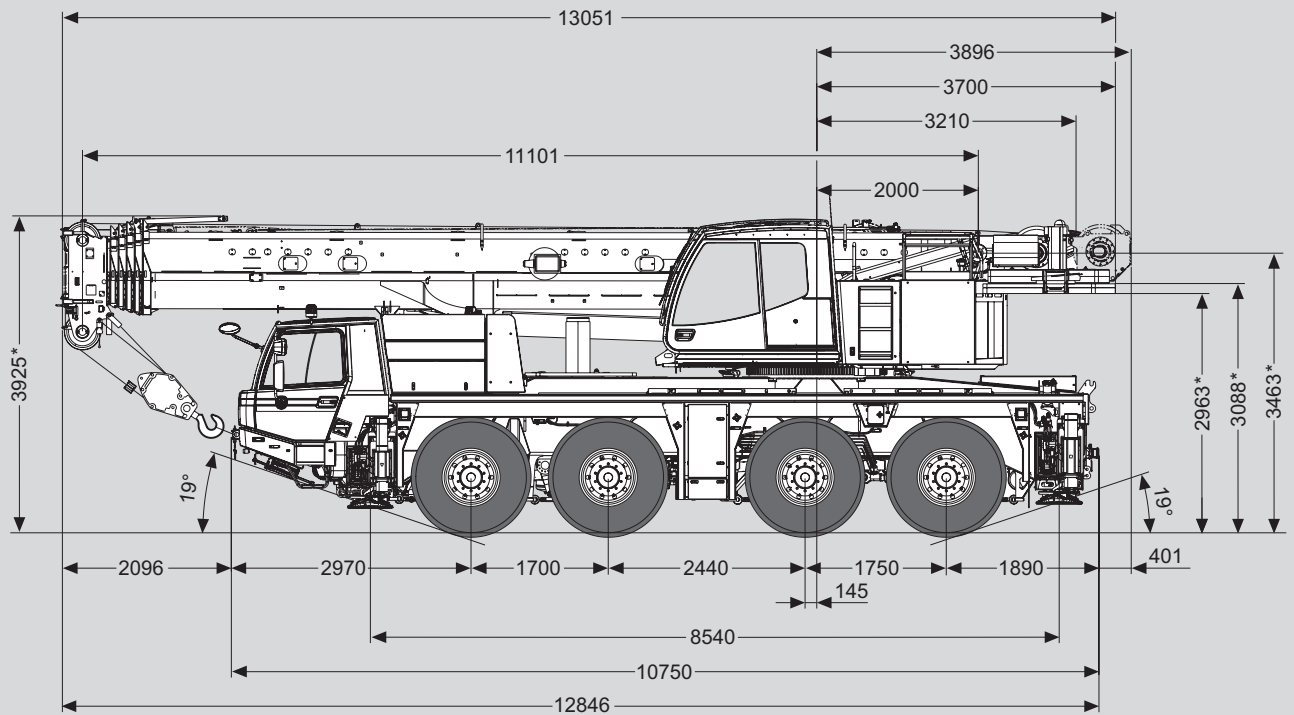


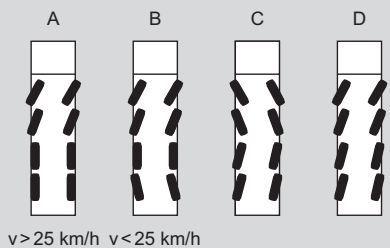
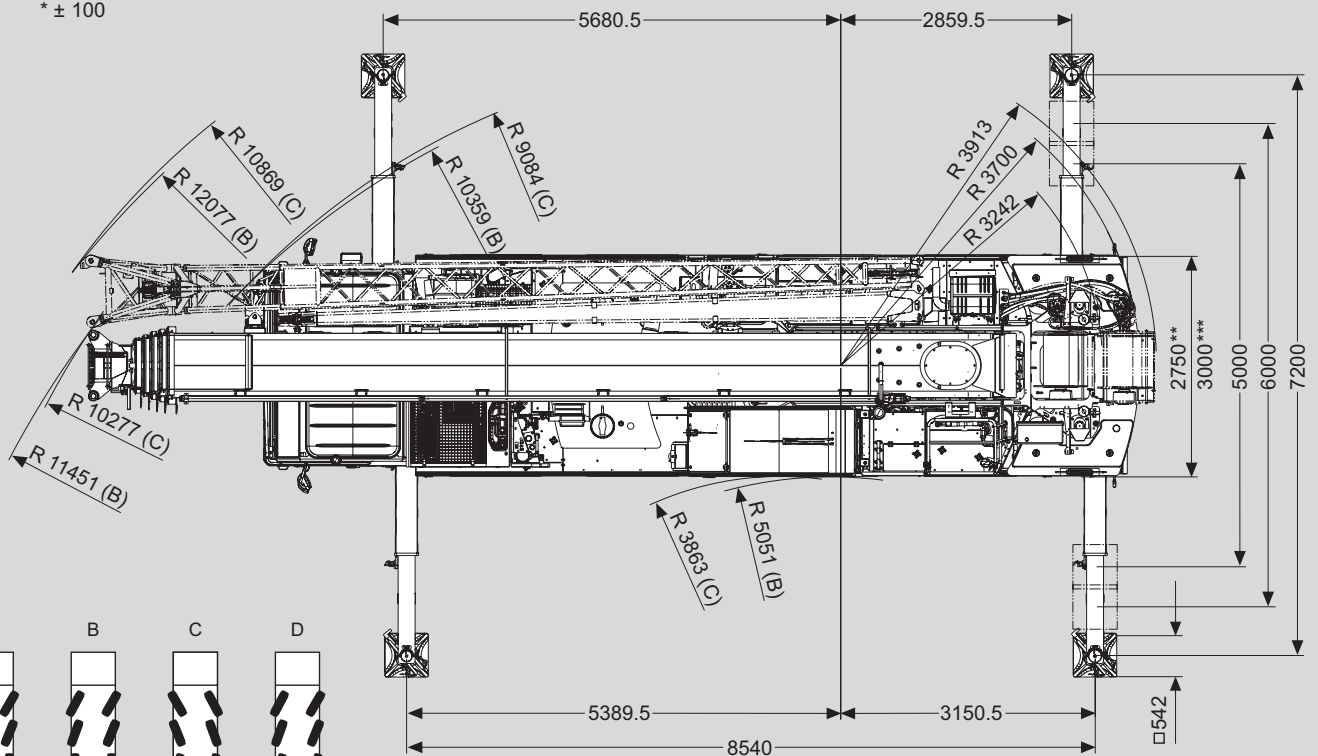
Maße (mm)
 Dimensions (mm)
 Dimensiones (mm)

445/95 R 25
 (16.00 R 25)

DIN/ISO/EN



* ± 100



v > 25 km/h v < 25 km/h

** 385/95 R 25 (14.00 R25), 445/95 R 25 (16.00 R25)
 *** 525/80 R 25 (20.5 R25)

Gewichte / Geschwindigkeiten
Weights / Working speeds
Poids / Vitesses
Pesos / Velocidades de trabajo

	Achse /Axle Essieu / Eje	1	2	3	4	Gesamtgewicht / Total weight Poids total / Peso total
	(t)	12	12	12	12	48 ^{1) 2)}

¹⁾ Incl. 6,0 t Gegengewicht, 10 m / 18 m Auslegerverlängerung, Unterflasche, Hakengeschirr, Bereifung 445/95 R 25 (16.00 R 25).

¹⁾ Incl. 6.0 t counterweight, 10 m / 18 m boom extension, hook block, swivel hook, tyres 445/95 R 25 (16.00 R 25).

¹⁾ Incl. de 6,0 t contrepoids, 10 m / 18 m flèche, moufle, elingues, pneus 445/95 R 25 (16.00 R 25).

¹⁾ Incl. contrapeso de 6,0 t, 10 m / 18 m plumín, gancho, gancho de bola, neumáticos 445/95 R 25 (16.00 R 25).

²⁾ Incl. 7,6 t Gegengewicht, Unterflasche, Hakengeschirr, Bereifung 445/95 R 25 (16.00 R 25).

²⁾ Incl. 7.6 t counterweight, hook block, swivel hook, tyres 445/95 R 25 (16.00 R 25).

²⁾ Incl. de 7,6 t contrepoids, moufle, elingues, pneus 445/95 R 25 (16.00 R 25).

²⁾ Incl. contrapeso de 7,6 t, gancho, gancho de bola, neumáticos 445/95 R 25 (16.00 R 25).

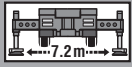
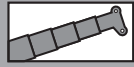
	Traglast / Lifting capacity / Force de levage / Capacidad de elevación	Rollen / Sheaves Pulies / Poleas	Stränge / Parts of line Brins / Ramales de cable	Gewicht / Weight Poid / Peso
	59.1 t (Typ / Type / Typo 63)*	5	11	650 kg
	38.1 t (Typ / Type / Typo 40)*	3	7	550 kg
	38.1 t (Typ / Type / Typo 40)	3	7	550 kg
	16.5 t (Typ / Type / Typo 20)	1	3	300 kg
	5.6 t (Typ / Type / Typo 6)	–	1	175 kg



			1	2	3	4	5	6	7	8	9	10	11	12	R1	R2	
			3	4	5	6	8	10	13	17	22	28	36	46	3	4	74%
385/95 R 25 (14.00 R 25) km/h			5	7	9	12	15	19	25	32	41	52	67	85	6	8	
			3	4	5	7	9	11	15	19	24	31	39	50	3	4	65%
445/95 R 25 (16.00 R 25) km/h			6	8	10	13	16	20	27	34	44	57	72	85	6	8	

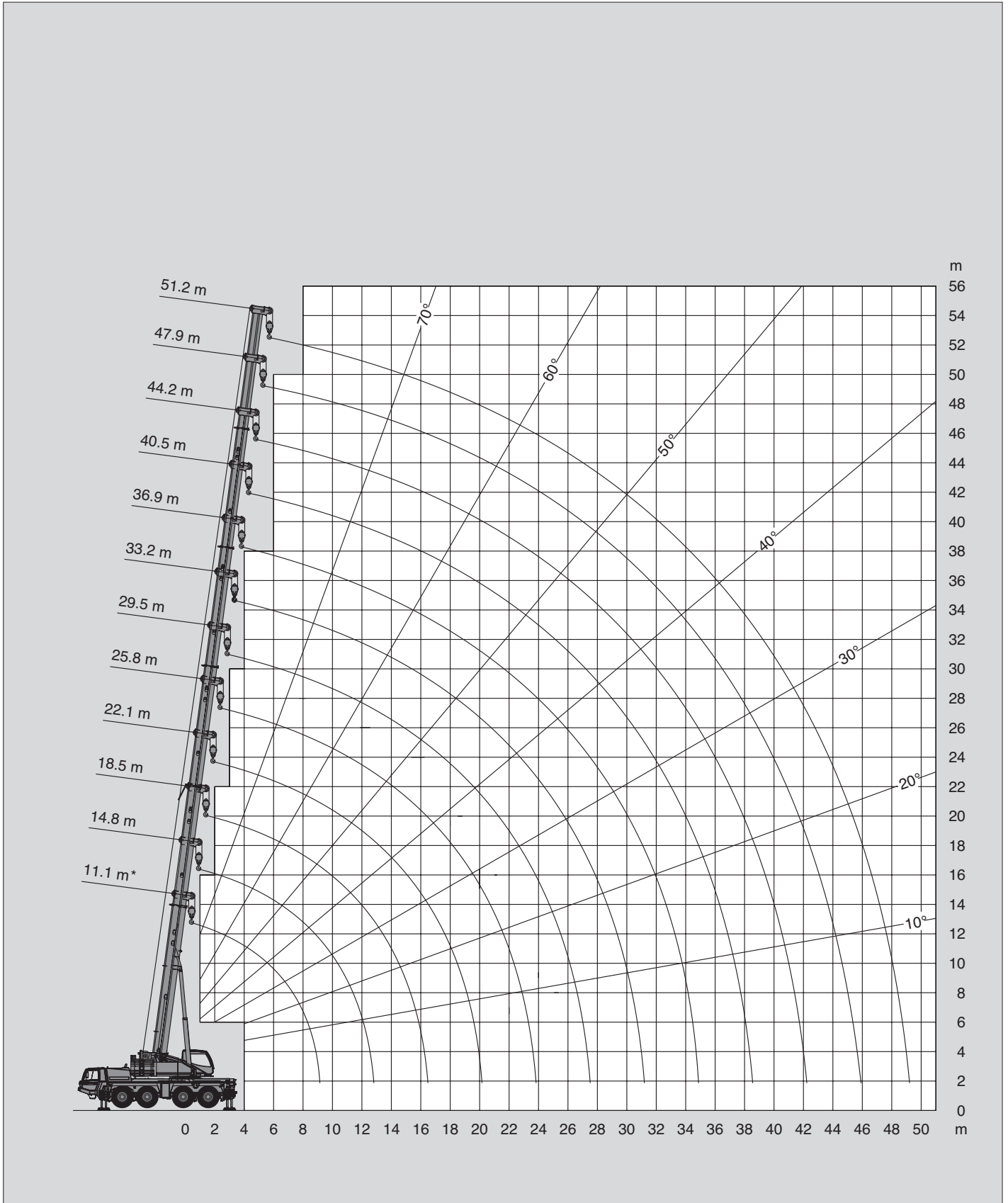
	Stufenlos Infinitely variable Progressivement variable Infinitamente variable	Seil Rope Câble Cable	Max. Seilzug Max. single line pull Effort maxi au brin simple Trio máximo por ramal
	0 - 115 m/min für einfachen Strang single line au brin simple ramal simple	18 mm / 230 m	55 kN
	0 - 115 m/min für einfachen Strang single line au brin simple ramal simple	18 mm / 230 m	55 kN
	0 - 2 min ⁻¹		0° + 180°
	- 1° – + 82.4° ca. 30 s approx. 30 s env. 30 s aproximadamente 30 s		
	11.1 m – 51.2 m ca. 310 s approx. 310 s env. 310 s aproximadamente 310 s		

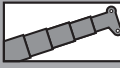
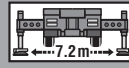


Hubhöhen
Lifting heights
Hauteurs de levage
Alturas de elevación



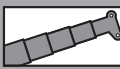
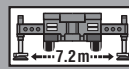


22.5t

DIN/ISO/EN




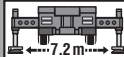

   22.5t DIN/ISO/EN													
 m 11.1 m* 11.1 m 14.8 m 18.5 m 22.1 m 25.8 m 29.5 m 33.2 m 36.9 m 40.5 m 44.2 m 47.9 m 51.2 m	11.1 m*	11.1 m	14.8 m	18.5 m	22.1 m	25.8 m	29.5 m	33.2 m	36.9 m	40.5 m	44.2 m	47.9 m	51.2 m
2.3	100.0												
2.5	90.0												
3.0	81.6	76.1	65.0	65.0									
3.5	74.6	69.9	65.0	65.0	50.0								
4.0	68.3	64.1	63.5	61.4	50.0	41.3							
4.5	62.7	59.0	58.5	56.7	50.0	41.3							
5.0	57.8	54.6	54.0	52.7	50.0	39.2	31.6						
6.0	50.0	47.2	46.6	46.8	45.9	34.9	31.6	23.8					
7.0	42.5	41.2	40.7	40.8	40.8	33.0	28.9	23.8	19.7	15.8			
8.0	36.6	35.5	35.4	35.5	35.8	31.1	28.5	23.8	19.7	15.8	12.9		
9.0	24.9	24.0	31.2	31.4	31.6	29.4	28.5	22.6	19.7	15.8	12.9	10.2	
10.0			26.7	26.9	27.3	28.0	27.0	20.9	19.6	15.8	12.9	10.2	8.9
11.0			22.7	23.4	24.7	24.9	24.0	19.4	18.2	15.8	12.9	10.2	8.9
12.0			20.0	21.9	21.9	21.7	21.3	18.0	17.0	15.8	12.9	10.2	8.9
14.0				17.2	17.3	17.0	16.6	16.2	14.9	14.1	12.9	10.2	8.9
16.0				14.0	14.1	13.8	13.4	13.9	13.0	12.6	11.8	10.2	8.9
18.0					11.7	11.5	11.1	11.5	11.7	10.8	10.8	10.0	8.9
20.0					9.2	9.7	9.3	9.7	9.9	9.5	9.5	9.1	8.5
22.0						8.3	8.4	8.3	8.5	8.6	8.4	8.1	7.6
24.0							7.8	7.2	7.7	7.4	7.3	7.0	6.9
26.0							6.9	6.5	6.7	6.5	6.3	6.0	6.0
28.0								6.0	5.9	5.7	5.5	5.2	5.2
30.0								5.3	5.2	5.0	4.8	4.5	4.5
32.0									4.7	4.4	4.3	3.9	3.9
34.0									4.2	3.9	3.7	3.4	3.4
36.0										3.5	3.3	3.0	3.0
38.0										3.1	2.9	2.6	2.6
40.0											2.6	2.2	2.2
42.0											2.3	1.9	1.9
44.0												1.7	1.6
46.0													1.4
48.0													1.2

* Nach hinten / * Over rear / * A l'arrière / * Sobre la parte trasera




   16.3t DIN/ISO/EN													
 m 11.1 m* 11.1 m 14.8 m 18.5 m 22.1 m 25.8 m 29.5 m 33.2 m 36.9 m 40.5 m 44.2 m 47.9 m 51.2 m	11.1 m*	11.1 m	14.8 m	18.5 m	22.1 m	25.8 m	29.5 m	33.2 m	36.9 m	40.5 m	44.2 m	47.9 m	51.2 m
2.3	100.0												
2.5	90.0												
3.0	81.6	76.3	65.0	65.0									
3.5	74.0	69.4	65.0	65.0	50.0								
4.0	67.5	63.5	63.0	61.4	50.0	41.3							
4.5	61.9	58.3	57.8	56.7	50.0	41.3							
5.0	57.1	53.8	53.3	52.7	50.0	39.2	31.6						
6.0	47.9	46.4	45.9	46.0	45.9	34.9	31.6	23.8					
7.0	40.4	39.7	39.2	39.3	38.5	33.0	28.9	23.8	19.7	15.8			
8.0	34.5	34.6	33.6	33.3	32.0	31.1	28.5	23.8	19.7	15.8	12.9		
9.0	24.9	24.0	27.1	27.3	28.1	28.0	26.4	22.6	19.7	15.8	12.9	10.2	
10.0			22.4	24.7	25.0	24.4	23.1	20.9	19.6	15.8	12.9	10.2	8.9
11.0			20.8	21.4	21.4	21.2	20.4	19.2	18.2	15.8	12.9	10.2	8.9
12.0			18.1	18.6	18.6	18.4	18.0	17.8	16.6	15.8	12.9	10.2	8.9
14.0				14.5	14.6	14.3	13.9	14.4	14.0	13.3	12.9	10.2	8.9
16.0				11.7	11.9	11.5	11.2	11.6	11.8	11.1	11.0	10.2	8.9
18.0					10.2	9.7	10.1	9.5	9.9	9.8	9.7	9.4	8.9
20.0					8.6	8.6	8.7	8.4	8.5	8.3	8.1	7.8	7.8
22.0						7.4	7.5	7.3	7.3	7.0	6.9	6.6	6.5
24.0							6.5	6.3	6.3	6.0	5.9	5.5	5.5
26.0							5.7	5.5	5.4	5.2	5.0	4.7	4.7
28.0								4.8	4.7	4.4	4.3	4.0	4.0
30.0								4.2	4.1	3.8	3.7	3.4	3.4
32.0									3.6	3.3	3.2	2.9	2.8
34.0									3.2	2.9	2.7	2.4	2.4
36.0										2.5	2.3	2.0	2.0
38.0										2.2	2.0	1.7	1.7
40.0											1.7	1.4	1.4
42.0											1.4	1.1	1.1
44.0												0.9	0.8
46.0													0.6

* Nach hinten / * Over rear / * A l'arrière / * Sobre la parte trasera

Tragfähigkeiten
Lifting capacities
Capacités de levage
Capacidades de elevación

  													DIN/ISO/EN	
→ m	11.1 m*	11.1 m	14.8 m	18.5 m	22.1 m	25.8 m	29.5 m	33.2 m	36.9 m	40.5 m	44.2 m	47.9 m	51.2 m	
2.3	100.0													
2.5	90.0													
3.0	81.0	75.7	65.0	65.0										
3.5	73.2	68.8	65.0	65.0	50.0									
4.0	66.7	62.7	62.3	61.4	50.0	41.3								
4.5	61.2	57.6	57.1	56.7	50.0	41.3								
5.0	55.5	53.1	52.6	52.2	50.0	39.2	31.6							
6.0	45.5	44.7	44.2	42.3	40.0	34.9	31.6	23.8						
7.0	37.0	37.1	35.7	33.6	32.2	32.5	28.9	23.8	19.7	15.8				
8.0	28.7	28.7	27.7	27.9	29.0	27.3	25.6	23.8	19.7	15.8	12.9			
9.0	23.1	23.1	23.4	24.9	24.8	23.4	22.0	20.8	19.7	15.8	12.9	10.2		
10.0			20.2	20.8	20.8	20.4	19.2	19.0	17.3	15.8	12.9	10.2	8.9	
11.0			17.2	17.7	17.8	17.5	16.9	16.8	16.1	14.9	12.9	10.2	8.9	
12.0			14.8	15.3	15.4	15.1	14.7	15.0	14.8	13.3	12.9	10.2	8.9	
14.0				11.9	12.4	12.0	12.5	11.7	12.0	11.9	11.0	10.2	8.9	
16.0				9.5	10.0	10.0	10.1	10.0	9.9	9.6	9.4	8.8	8.6	
18.0					8.1	8.2	8.3	8.1	8.1	7.8	7.6	7.3	7.2	
20.0					6.8	6.8	6.9	6.7	6.7	6.4	6.3	5.9	5.9	
22.0						5.7	5.8	5.6	5.6	5.3	5.2	4.8	4.8	
24.0							4.9	4.8	4.7	4.4	4.3	4.0	4.0	
26.0							4.2	4.0	4.0	3.7	3.6	3.3	3.2	
28.0								3.5	3.4	3.1	3.0	2.7	2.6	
30.0								3.0	2.9	2.6	2.5	2.2	2.1	
32.0									2.5	2.2	2.0	1.7	1.7	
34.0									2.1	1.8	1.7	1.4	1.3	
36.0										1.5	1.3	1.0	1.0	
38.0										1.2	1.1	0.7	0.7	
40.0											0.8	0.5	0.5	
42.0											0.6			

* Nach hinten / * Over rear / * A l'arrière / * Sobre la parte trasera

  													DIN/ISO/EN	
→ m	11.1 m*	11.1 m	14.8 m	18.5 m	22.1 m	25.8 m	29.5 m	33.2 m	36.9 m	40.5 m	44.2 m	47.9 m	51.2 m	
2.3	100.0													
2.5	90.0													
3.0	80.6	75.4	65.0	65.0										
3.5	72.8	68.5	65.0	65.0	50.0									
4.0	66.3	62.4	61.9	61.4	50.0	41.3								
4.5	60.8	57.2	56.7	56.4	50.0	41.3								
5.0	54.2	52.5	51.9	50.2	47.9	39.2	31.6							
6.0	44.4	44.0	41.7	38.9	36.8	34.2	31.6	23.8						
7.0	33.9	34.0	32.8	30.8	31.8	30.0	27.9	23.8	19.7	15.8				
8.0	26.2	26.2	25.2	27.9	26.7	25.1	23.5	21.9	19.7	15.8	12.9			
9.0	21.0	21.0	22.2	22.8	22.8	21.5	20.2	19.9	18.1	15.8	12.9	10.2		
10.0			18.4	19.0	19.0	18.7	17.5	17.4	16.1	15.3	12.9	10.2	8.9	
11.0			15.6	16.2	16.2	15.9	15.4	15.4	15.1	13.5	12.9	10.2	8.9	
12.0			13.4	13.9	14.5	13.7	14.2	13.7	13.5	12.9	11.8	10.2	8.9	
14.0				10.7	11.2	11.2	11.3	11.2	11.2	10.7	10.2	9.5	8.9	
16.0				8.4	8.9	8.9	9.0	8.8	8.8	8.5	8.4	7.8	7.6	
18.0					7.2	7.2	7.3	7.2	7.1	6.8	6.7	6.3	6.3	
20.0					5.9	5.9	6.0	5.9	5.8	5.6	5.4	5.1	5.1	
22.0						4.9	5.0	4.9	4.8	4.6	4.4	4.1	4.1	
24.0							4.2	4.1	4.0	3.8	3.6	3.3	3.3	
26.0							3.6	3.4	3.4	3.1	3.0	2.6	2.6	
28.0								2.9	2.8	2.6	2.4	2.1	2.1	
30.0								2.4	2.4	2.1	1.9	1.6	1.6	
32.0									2.0	1.7	1.6	1.2	1.2	
34.0									1.6	1.4	1.2	0.9	0.9	
36.0										1.1	0.9	0.6	0.6	
38.0										0.8	0.6			

* Nach hinten / * Over rear / * A l'arrière / * Sobre la parte trasera