

ATF 220G-5

220 METRISCHE TONNEN TRAGLAST / 220 METRIC TON CAPACITY

**ALL
TERRAIN
CRANE**

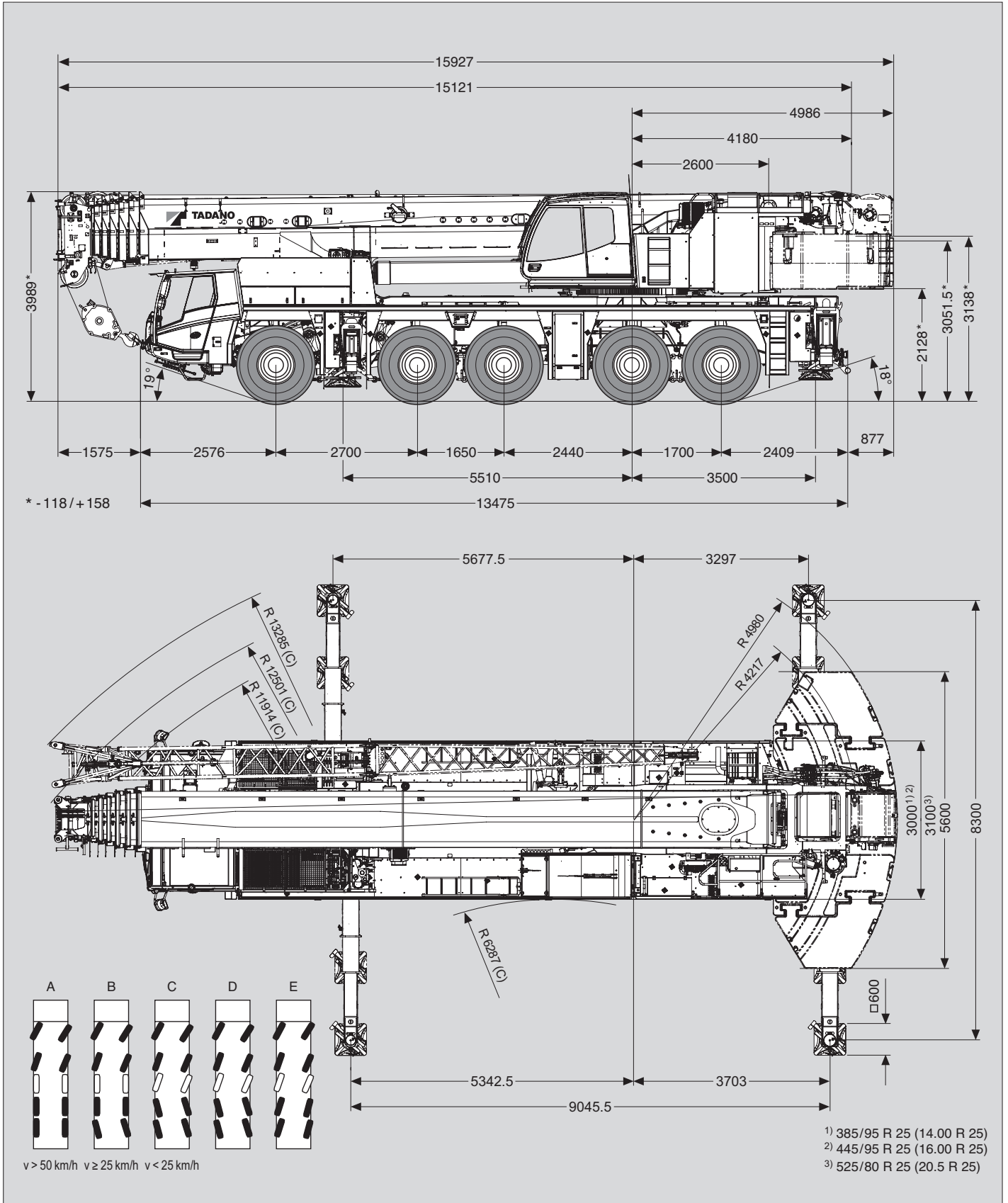


**2 MOTOREN
ENGINES**

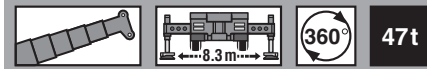
Maße (mm)
Dimensions (mm)
Dimensiones (mm)


445/95 R 25
(16.00 R 25)

DIN/ISO/EN



Tragfähigkeiten
Lifting capacities
Capacités de levage
Capacidades de elevación


DIN/ISO/EN

 m	13.2 m*	13.2 m	17.4 m	21.6 m	25.8 m	30.0 m	34.1 m	38.3 m	42.5 m	46.7 m	50.9 m	55.0 m	59.2 m	63.4 m	68.0 m
2.5	220.0**														
3.0	180.0**	174.5**	140.0**	140.0**	114.4										
3.5	169.5**	157.4**	140.0**	140.0**	114.3	90.5									
4.0	154.1**	142.9**	140.0**	140.0**	108.8	90.5									
4.5	137.2**	130.6	130.1	129.2	103.7	90.5	70.0								
5.0	123.4	119.9	119.4	118.5	103.0	87.0	70.0	54.5							
6.0	102.5	102.5	102.0	101.1	101.8	79.8	70.0	54.5	43.5						
7.0	86.7	86.8	86.4	85.5	86.1	77.5	66.2	54.5	43.5	34.5					
8.0	74.8	74.9	74.4	73.6	74.2	75.0	61.2	54.5	43.5	34.5	28.5				
9.0	65.6	65.7	65.2	64.4	65.0	65.7	58.0	52.0	43.4	34.5	28.5	23.0			
10.0	58.3	58.3	57.8	57.0	57.5	58.3	58.0	48.9	41.4	34.5	28.5	23.0	18.8		
11.0			51.7	50.9	51.5	52.2	52.2	45.7	39.4	34.1	28.5	23.0	18.8	15.0	
12.0			46.6	45.7	46.3	47.0	46.7	42.8	37.6	32.6	28.3	23.0	18.8	15.0	13.8
14.0			36.2	35.1	35.8	36.8	38.7	38.2	35.6	30.0	26.8	22.8	18.8	15.0	13.8
16.0				28.3	30.2	32.9	32.3	31.5	30.5	28.5	24.9	21.8	18.8	15.0	13.8
18.0				26.2	27.6	27.4	26.9	26.1	25.3	25.1	23.1	20.4	18.3	15.0	13.4
20.0					23.5	23.3	22.8	22.0	21.4	21.0	21.2	19.1	17.2	15.0	13.1
22.0					20.4	20.1	19.6	18.8	19.5	17.9	18.0	17.8	16.2	14.8	12.8
24.0						17.5	17.0	16.2	16.9	15.4	15.9	15.7	15.2	14.0	12.5
26.0						15.5	14.9	14.1	14.8	14.6	14.5	14.2	14.1	13.3	12.2
28.0							13.1	12.3	13.0	13.5	12.7	12.9	12.4	12.6	11.4
30.0							11.7	10.9	11.5	12.0	11.2	11.4	11.8	11.3	10.6
32.0								9.6	10.2	10.7	10.5	10.8	10.5	10.0	9.9
34.0								8.8	9.6	9.7	9.8	9.8	9.4	8.8	8.8
36.0									9.1	9.1	9.2	8.8	8.4	7.8	7.8
38.0									8.7	8.5	8.4	7.9	7.5	7.0	6.9
40.0										7.8	7.6	7.2	6.7	6.2	6.2
42.0										7.2	6.9	6.5	6.0	5.5	5.5
44.0										6.6	6.3	5.8	5.4	4.9	4.8
46.0											5.7	5.3	4.8	4.3	4.3
48.0											5.2	4.8	4.3	3.8	3.7
50.0												4.3	3.8	3.3	3.3
52.0												3.9	3.4	2.9	2.8
54.0													3.0	2.5	2.5
56.0													2.7	2.1	2.1
58.0														1.8	1.8
60.0														1.5	1.5
62.0															1.2

* Nach hinten / * Over rear / * A l'arrière / * Sobre la parte trasera

** Mit Zusatzhubausrüstung / ** With additional lifting equipment / ** Avec équipement supplémentaire / ** Con equipo adicional