



AC 40/2 (L)
40t capacity class
All terrain crane
Datasheet
metric

AC 40/2 (L)

PRELIMINARY

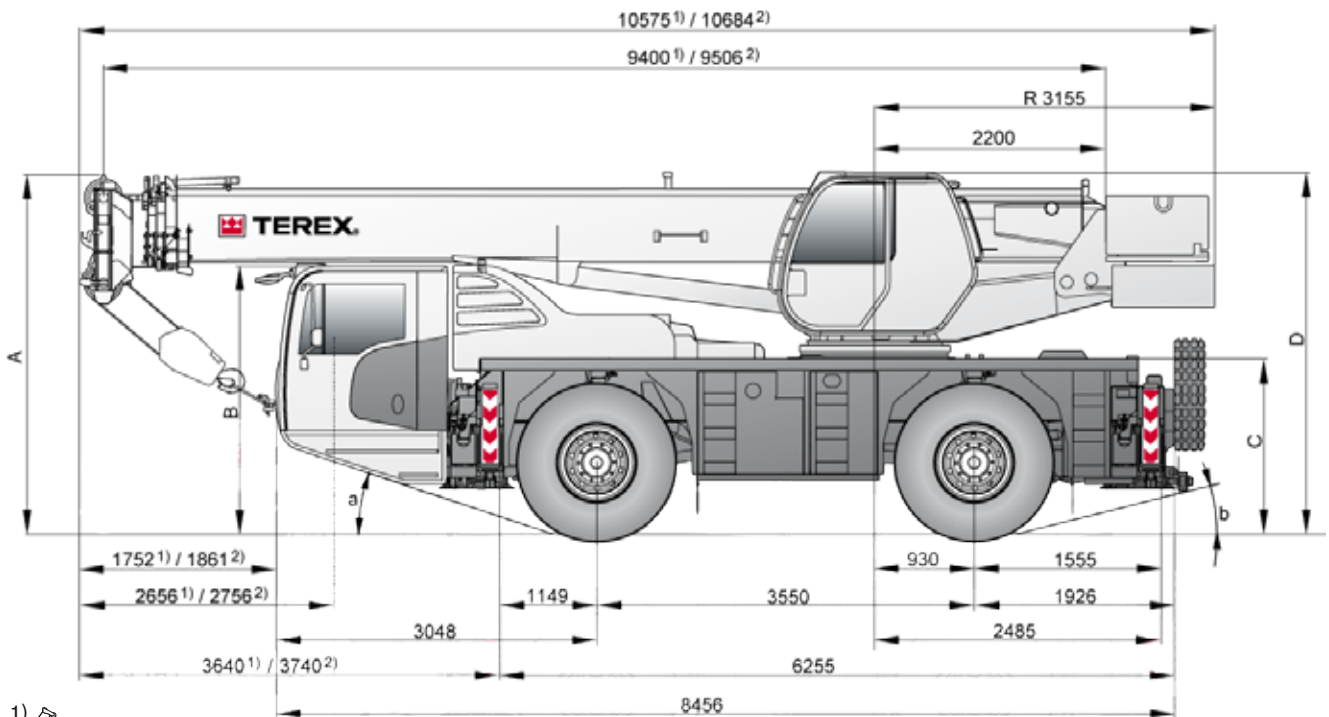


WORKS FOR YOU.™

DIMENSIONS

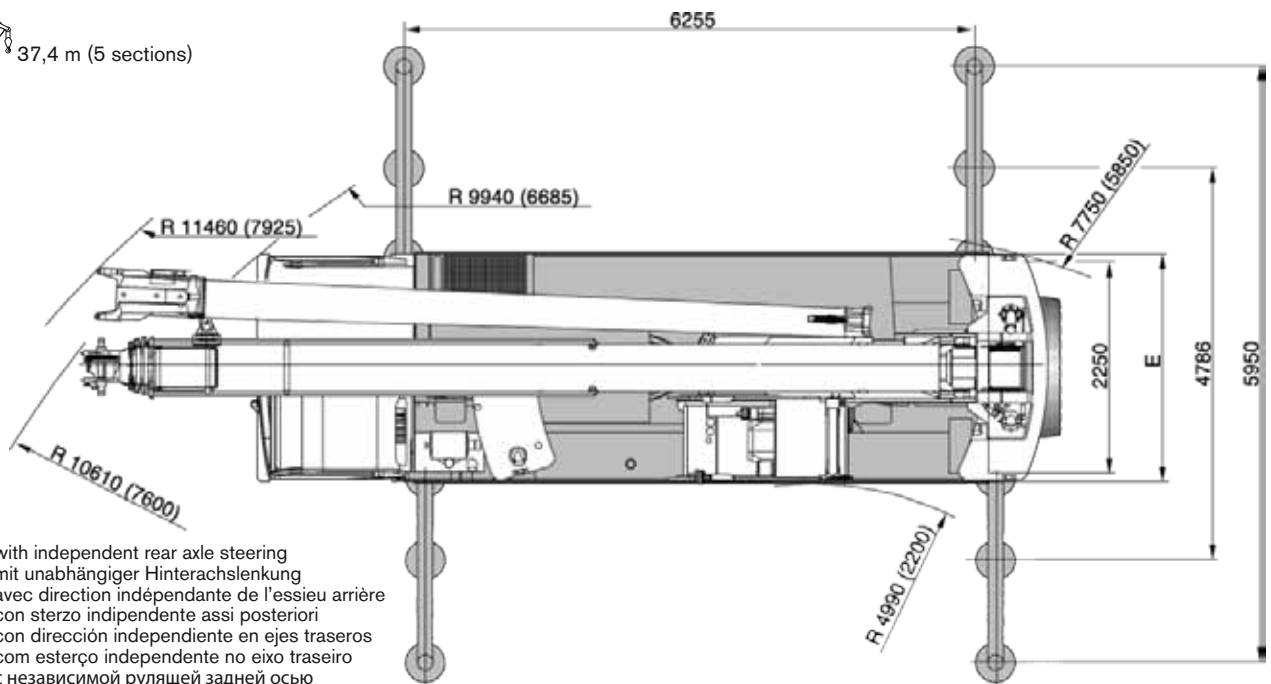
AC 40/2 (L)

Abmessungen · Encombrement · Dimensioni · Dimensiones · Dimensões · Размеры



1) 30,4 m (4 sections)

2) 37,4 m (5 sections)



() with independent rear axle steering
 mit unabhängiger Hinterachslenkung
 avec direction indépendante de l'essieu arrière
 con sterzo indipendente assi posteriori
 con dirección independiente en ejes traseros
 com esterço independente no eixo traseiro
 с независимой рулящей задней осью

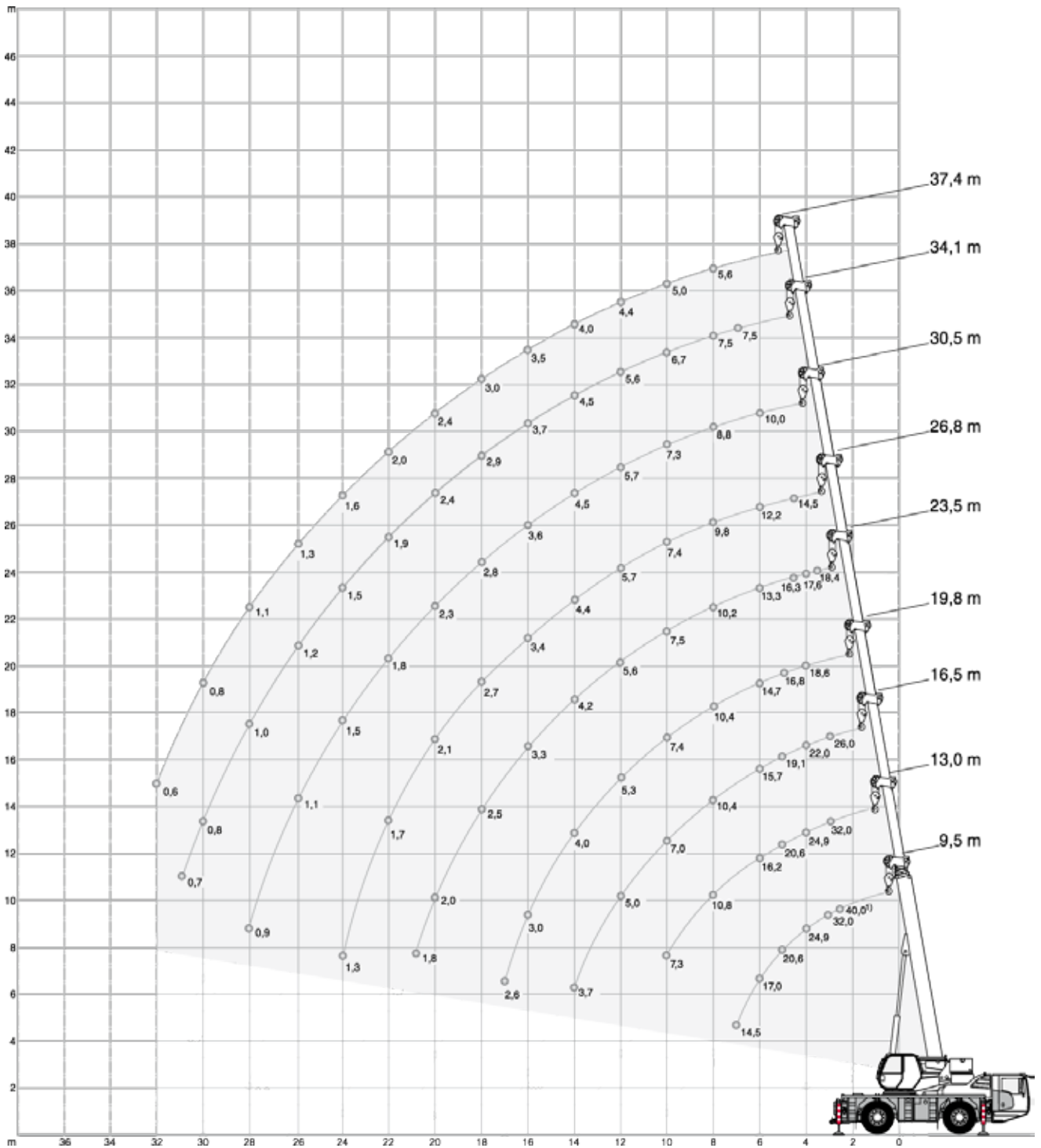
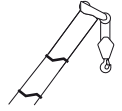
	A*	B*	C*	D*	E	a	b
14.00 x 25	3350	2475	1580	3350	2550	11°	11°
16.00 x 25	3400	2525	1630	3400	2550	13°	13°
20.5 x 25	3400	2525	1630	3400	2850	13°	13°

* Suspension lowered to 80 mm · Federung abgesenkt auf 80 mm · Suspension abaixée à 80 mm · Sospensione abbassata a 80 mm · Suspensión rebajada a 80 mm · Suspensão rebaixada para 80 mm · Подвеска, опущенная до 80 мм

HA




AC 40/2 L

5 sections · 5 Segmente · 5 sections · 5 sezioni ·
5 secciones · 5 seções · 5-секционная



¹⁾ over rear · nach hinten · sur l'arrière · sul retro · hacia atrás · para trás · сзади

5 sections · 5 Segmente · 5 sections · 5 sezioni · 5 secciones · 5 seções · 5-секционная

5,5 t		6,20 x 5,95 m									360°	ISO	
													
m		9,50	13,00	16,50	19,80	23,50	26,80	30,50	34,10	37,40	m		
t		t	t	t	t	t	t	t	t	t	t		
2,6	40,00 ¹⁾	-	-	-	-	-	-	-	-	-	2,6		
3,0	35,00 ¹⁾	-	-	-	-	-	-	-	-	-	3,0		
3,0	32,00	32,00	25,95	18,95	-	-	-	-	-	-	3,0		
3,5	27,45	27,45	23,70	18,35	18,40	-	-	-	-	-	3,5		
4,0	24,90	24,90	22,00	18,60	17,55	-	-	-	-	-	4,0		
4,5	22,60	22,60	20,45	17,95	16,25	14,45	-	-	-	-	4,5		
5,0	20,60	20,60	19,05	16,75	15,15	13,85	-	-	-	-	5,0		
6,0	17,00	17,85	17,25	14,70	13,30	12,20	10,00	-	-	-	6,0		
7,0	14,45	14,95	14,60	12,75	11,80	10,90	9,65	7,45	-	-	7,0		
8,0	-	11,85	12,15	11,65	10,20	9,75	8,80	7,45	5,55	-	8,0		
9,0	-	9,75	10,00	10,10	8,70	8,55	8,00	7,05	5,35	-	9,0		
10,0	-	8,15	8,40	8,55	7,50	7,40	7,30	6,70	5,00	-	10,0		
11,0	-	-	7,20	7,35	6,95	6,50	6,40	6,15	4,65	-	11,0		
12,0	-	-	6,25	6,40	6,50	5,70	5,70	5,60	4,40	-	12,0		
13,0	-	-	5,45	5,60	5,70	5,25	5,05	5,00	4,15	-	13,0		
14,0	-	-	4,85	4,95	5,05	4,95	4,50	4,50	3,95	-	14,0		
15,0	-	-	-	4,40	4,50	4,60	4,00	4,05	3,70	-	15,0		
16,0	-	-	-	3,95	4,05	4,10	3,55	3,65	3,45	-	16,0		
17,0	-	-	-	3,55	3,65	3,70	3,15	3,25	3,25	-	17,0		
18,0	-	-	-	-	3,30	3,35	2,80	2,90	3,00	-	18,0		
19,0	-	-	-	-	3,00	3,05	2,50	2,60	2,70	-	19,0		
20,0	-	-	-	-	2,75	2,80	2,25	2,35	2,40	-	20,0		
21,0	-	-	-	-	2,50	2,55	2,00	2,25	2,15	-	21,0		
22,0	-	-	-	-	-	2,35	1,80	2,10	1,95	-	22,0		
23,0	-	-	-	-	-	2,15	1,60	1,95	1,75	-	23,0		
24,0	-	-	-	-	-	1,95	1,45	1,75	1,60	-	24,0		
25,0	-	-	-	-	-	-	1,35	1,60	1,45	-	25,0		
26,0	-	-	-	-	-	-	1,25	1,45	1,30	-	26,0		
27,0	-	-	-	-	-	-	1,15	1,35	1,15	-	27,0		
28,0	-	-	-	-	-	-	1,05	1,20	1,05	-	28,0		
29,0	-	-	-	-	-	-	-	1,10	0,90	-	29,0		
30,0	-	-	-	-	-	-	-	1,00	0,80	-	30,0		
31,0	-	-	-	-	-	-	-	-	0,90	0,70	31,0		
32,0	-	-	-	-	-	-	-	-	-	0,60	32,0		
33,0	-	-	-	-	-	-	-	-	-	0,55	33,0		

¹⁾ over rear · nach hinten · sur l'arrière · sul retro · hacia atrás · para trás · сзади

Lengths may vary depending on various telescoping sequences

Längen können in Abhängigkeit von den Teleskopier-Sequenzen variieren

Les longueurs peuvent varier en fonction des séquences de télescopage

Le lunghezze possono variare in base alle sequenze di sfilo

Las longitudes pueden variar en función de varias secuencias de telescopaje

Os comprimentos podem variar dependendo das várias sequências de telescopagem

Длина может изменяться в зависимости от используемого режима выдвижения/втягивания стрелы