

# Hiab XS 600

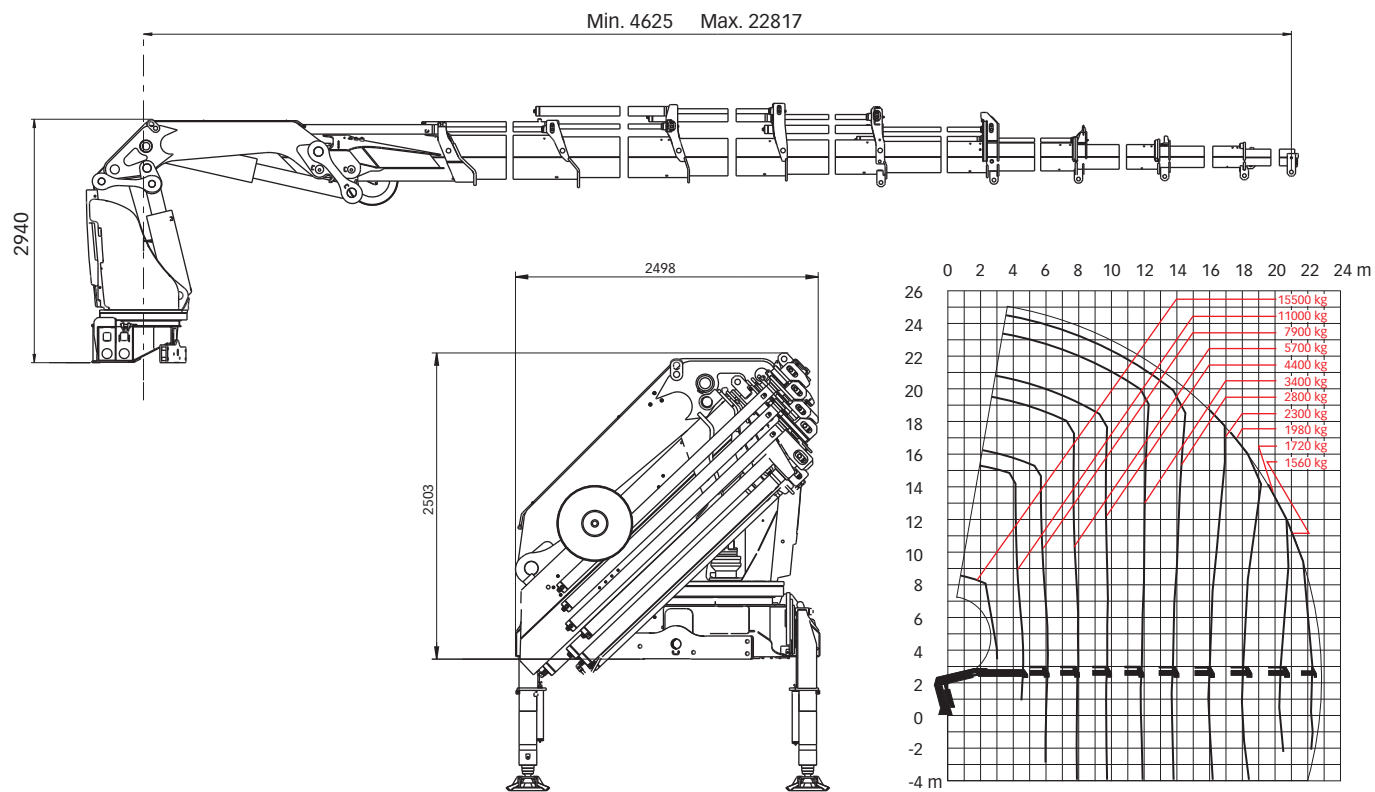
## Capacity 57 tm



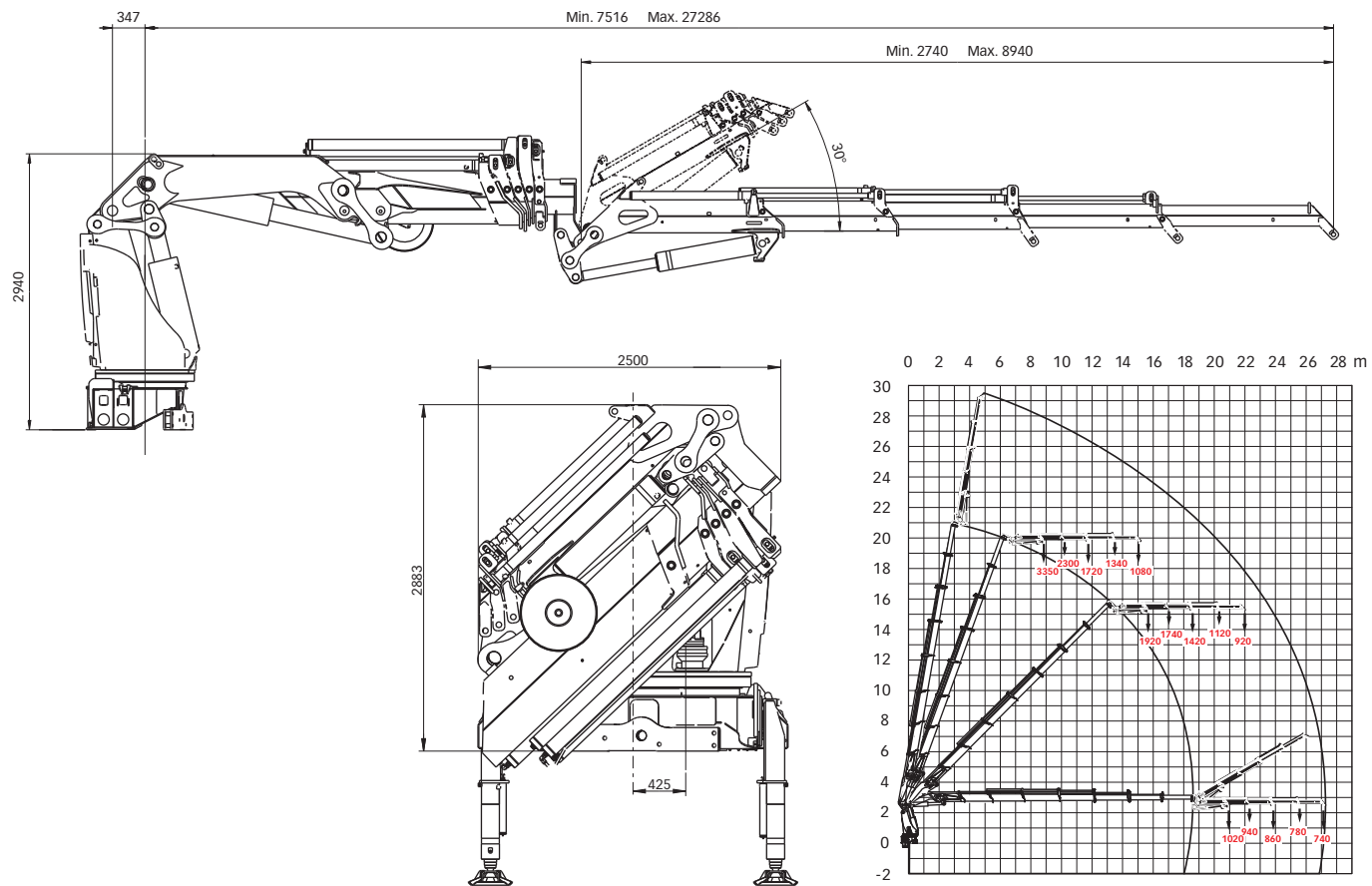
# Hiab XS 600 Basic data

Technical data	EP-5 HiPro	E-6 HiPro	E-7 HiPro	E-9 HiPro
Max. lifting capacity (kNm)	526	517	511	500
Outreach - hydraulic extensions (m)	14.8	16.1	18.4	22.8
Outreach - manual extensions (m)	-	-	-	-
Outreach - jib (m)	-	-	27.2	-
Outreach / Lifting capacity, standard (m / kg)	3.2 / 15900	3.2 / 15900	3.1 / 15800	3.2 / 15500
	4.7 / 11400	4.3 / 12200	4.4 / 11800	4.6 / 11000
	6.3 / 8300	5.9 / 8600	6.0 / 8300	6.1 / 7900
	8.2 / 6200	7.7 / 6400	7.8 / 6100	7.9 / 5700
	10.2 / 4900	9.6 / 4900	9.7 / 4700	9.8 / 4400
	12.4 / 4000	11.6 / 4000	11.7 / 3700	11.8 / 3400
	14.7 / 3300	13.7 / 3300	13.8 / 3100	13.9 / 2800
	-	15.9 / 2800	16.0 / 2600	16.1 / 2300
	-	-	18.2 / 2300	18.3 / 1980
	-	-	-	20.5 / 1720
	-	-	-	22.6 / 1560
Outreach / Lifting capacity, with jib (m / kg)	-	-	21.1 / 1020	-
	-	-	22.3 / 940	-
	-	-	23.8 / 860	-
	-	-	25.8 / 780	-
	-	-	27.1 / 740	-
Slewing angle	∞	∞	∞	∞
Height in folded position (mm)	2555	2503	2503	2503
Width in folded position (mm)	2500	2500	2500	2500
Installation space needed (mm)	1436	1569	1569	1569
Weight - "standard" crane without stabilizers (kg)	5550	5865	6100	6470
Weight - stabilizer equipment (kg)	1120 - 1245	1120 - 1245	1120 - 1245	1120 - 1245
Weight - jib (kg)	-	-	1000	-

Hiab XS 600 E-9 HiPro



Hiab XS 600 E-7 jib 135X-4



**Disclaimer.** Hiab cranes have been built to meet the highest standards of safety and service life and have been thoroughly tested. Strength calculations for this model have been carried out in accordance with EN13001 in fatigue class S0. Cargotec's certified Quality Assurance System complies with ISO 9001. Some of the items in our literature may be extra equipment. Certain applications may require an official permit. We reserve the right to change technical specifications without prior notice. Hiab cranes produced for EU-countries are CE-marked and comply with the European Standard EN 12999.

**Cargotec** improves the efficiency of cargo flows by offering solutions for the loading and unloading of goods on land and at sea – wherever cargo is on the move. Cargotec's main daughter brands for cargo handling Hiab, Kalmar and MacGregor are global market leaders in their fields. [www.cargotec.com](http://www.cargotec.com)